

MONTHLY MEMBERSHIP PROGRESS REPORT

LOCATION BRITISH COLUMBIA

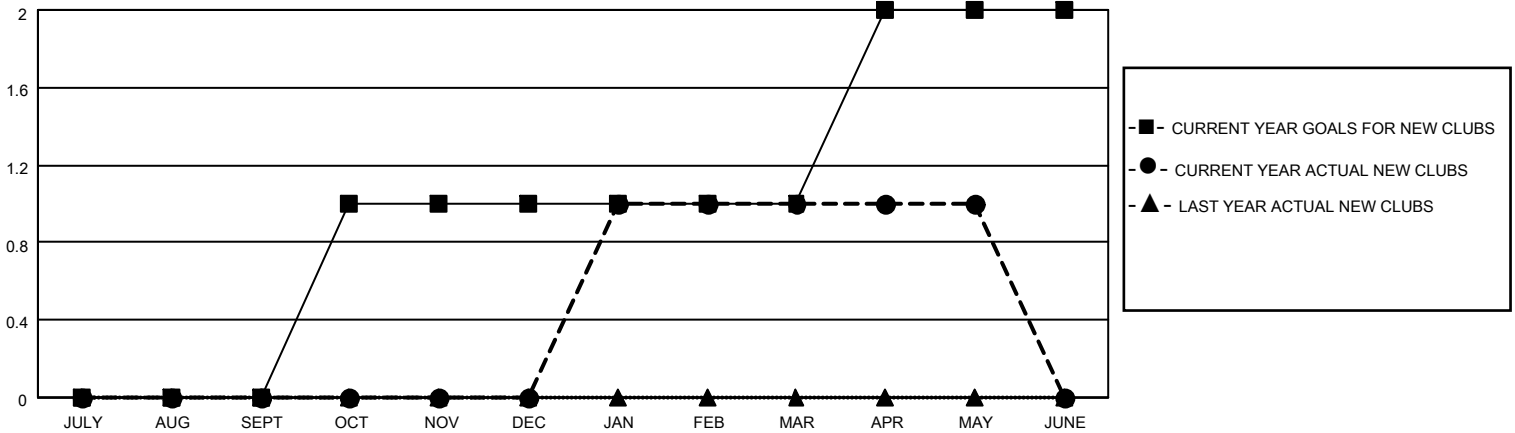
District 19 A

Results as of: 5/31/2023

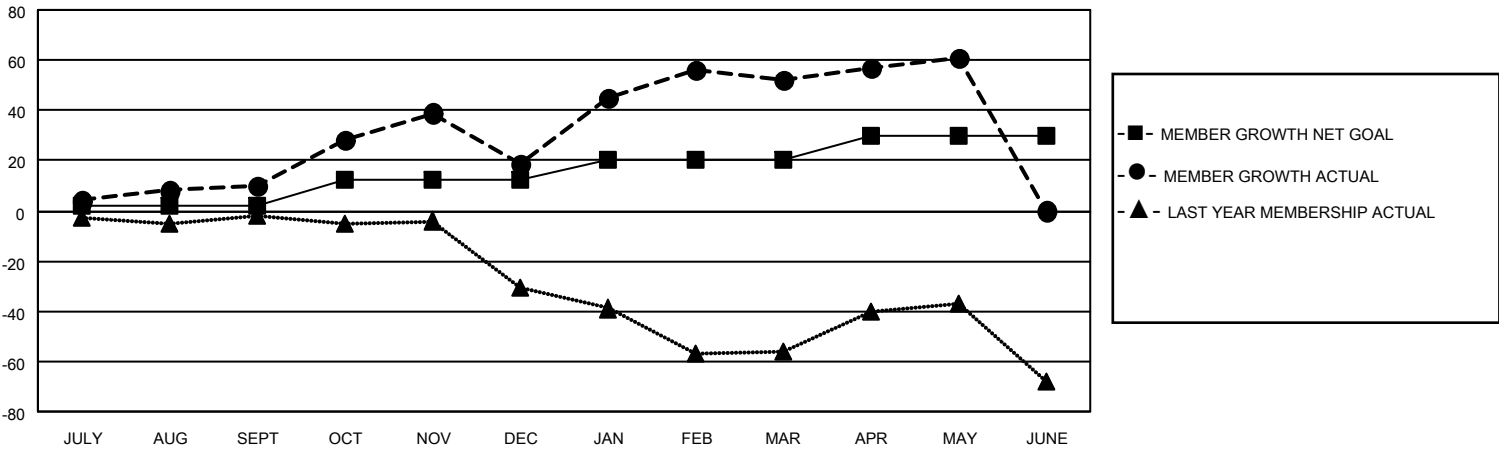
Clubs			
RESULTS FOR 2022-2023			
QUARTER	NEW CLUB GOAL	NEW CLUBS	DROPPED CLUBS
JULY/AUG/SEPT	0	0	0
OCT/NOV/DEC	1	0	1
JAN/FEB/MAR	0	1	0
APR/MAY/JUNE	1	0	0

Members			
RESULTS FOR 2022-2023			
QUARTER	MEMBER GROWTH NET GOAL	MEMBER GROWTH ACTUAL	DROPPED MEMBERS ACTUAL (including transfers)
JULY/AUG/SEPT	2	35	24
OCT/NOV/DEC	10	39	30
JAN/FEB/MAR	8	52	15
APR/MAY/JUNE	10	16	6

GOALS AND ACTUAL NEW CLUBS CUMULATIVE



GOALS AND ACTUAL MEMBERS CUMULATIVE



DROPPED CLUBS: 1

27 CLUBS OF 47 ADDED 1 OR MORE NEW MEMBERS

GENDER DISTRIBUTION

MALE	515 (52.98%)
FEMALE	456 (46.91%)
NON BINARY	0 (0.00%)
PREFER NOT TO ANSWER	1 (0.10%)

DROPPED MEMBERS

[CLICK HERE FOR CUMULATIVE MEMBERSHIP DATA](#)

DECEASED	3
CLUB CANCELLED	13
OTHER	59
TOTAL	75

TOTAL FAMILY UNIT MEMBERS	72
FAMILY MEMBERS PAYING HALF DUES	37